

Canal Restoration in Monroe County Benthic Monitoring Report



Jason Howard and James Fourqurean
Seagrass Ecosystems Research Lab
Florida International University

WATER QUALITY PROTECTION PROGRAM CANAL RESTORATION ADVISORY SUBCOMMITTEE
December 11th, 2015

Made possible by



Alex Perez
SERL Technician



Christian Lopes
SERL Technician

Made possible by



Townships
Homeowner Organizations
Individuals



**Seagrass Ecosystems
Research Lab**
Florida International University



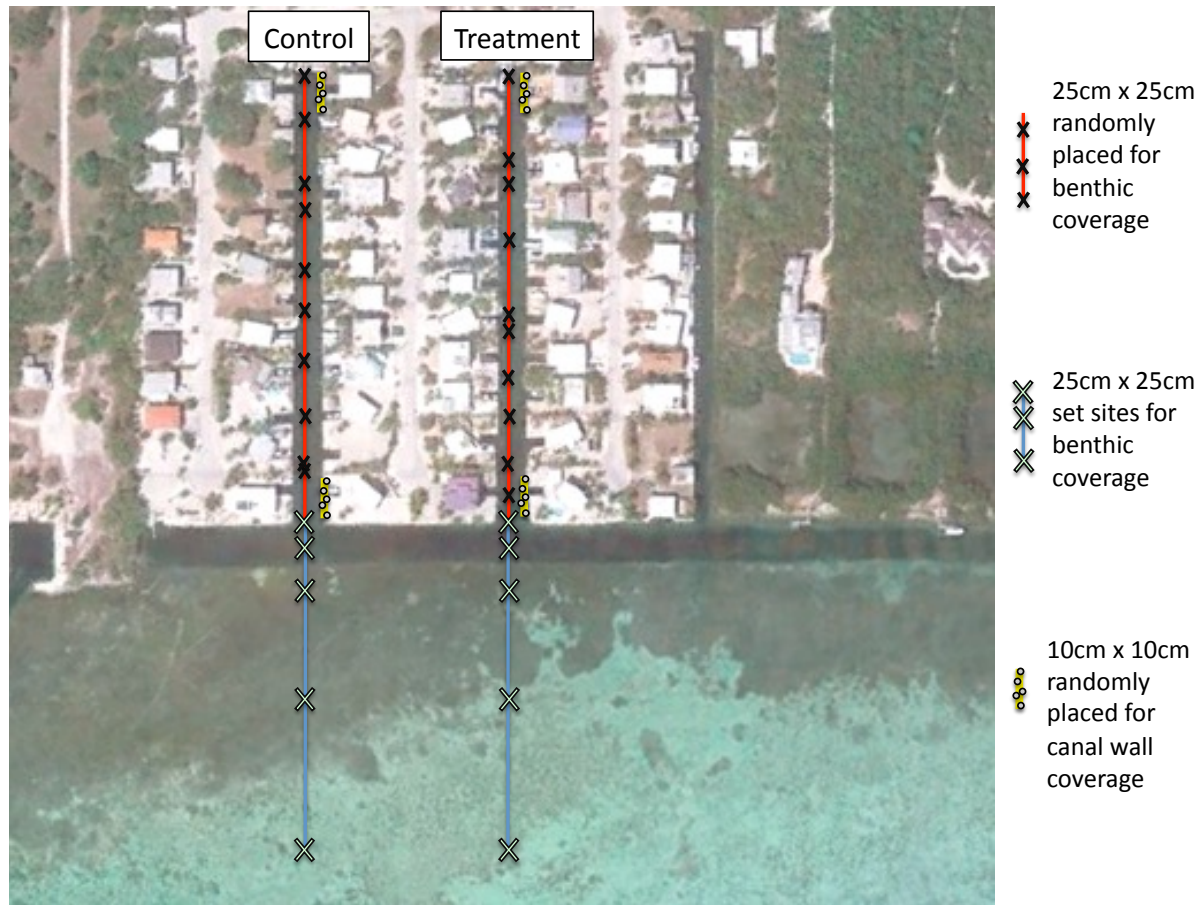
About Us



<http://seagrass.fiu.edu>
jhowa033@fiu.edu

Canal Sampling

Nine experimental Pairs, Five Technologies
Sampled 3 times/year



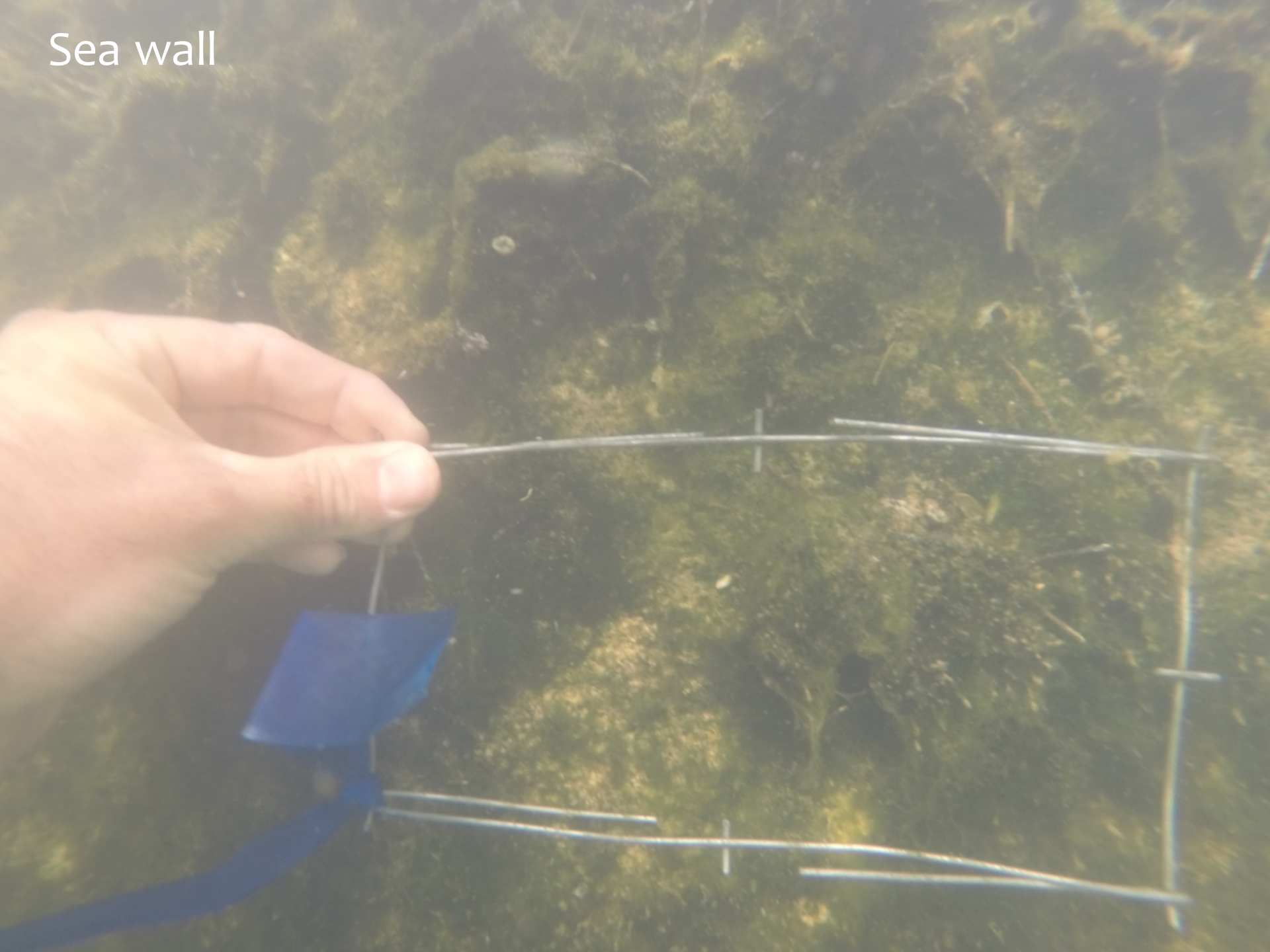
Quantifying species
of seagrass, algae,
sponges, corals



Animal surveys



Sea wall



Sediment Characteristics









2015/11/21

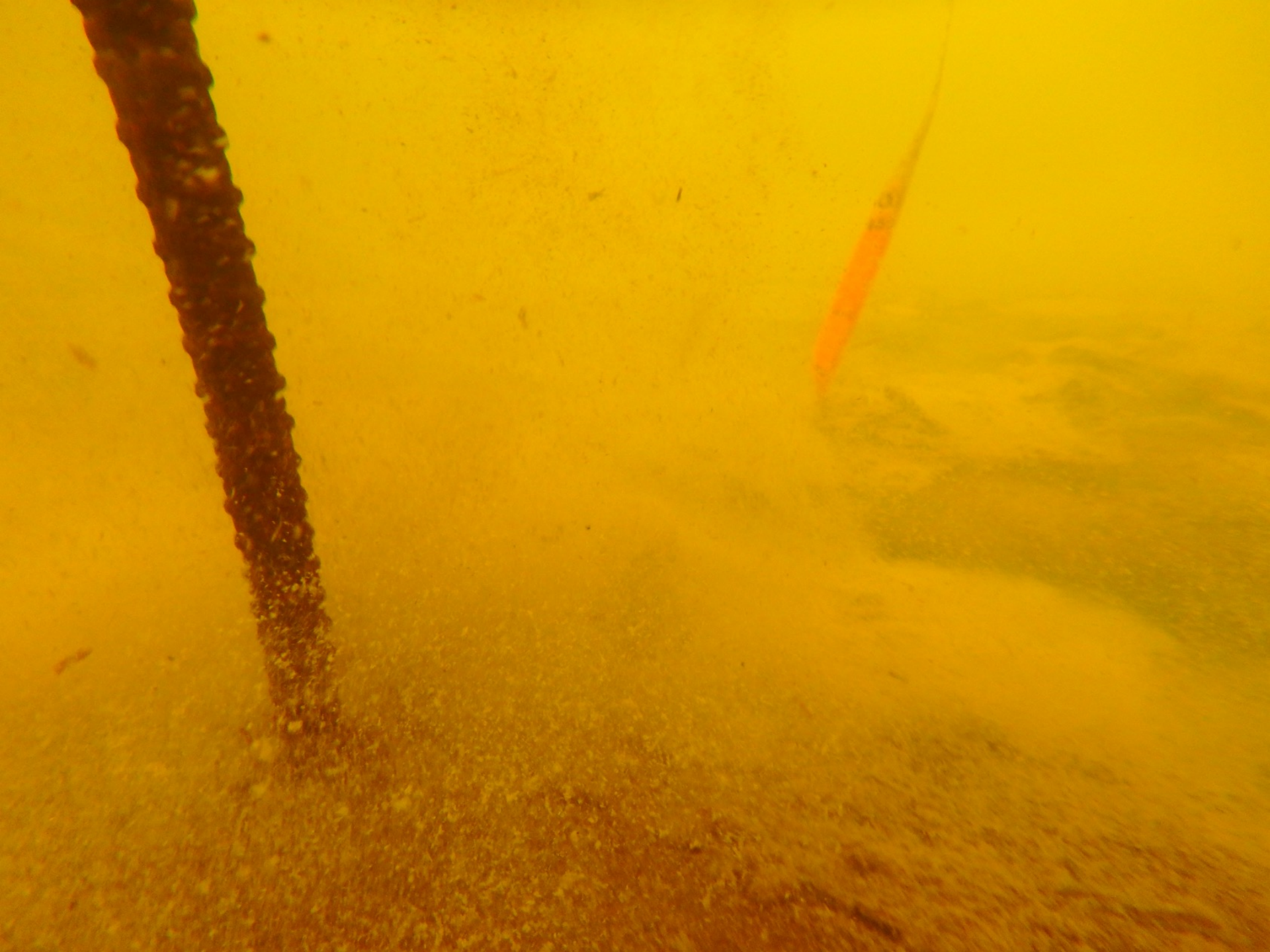












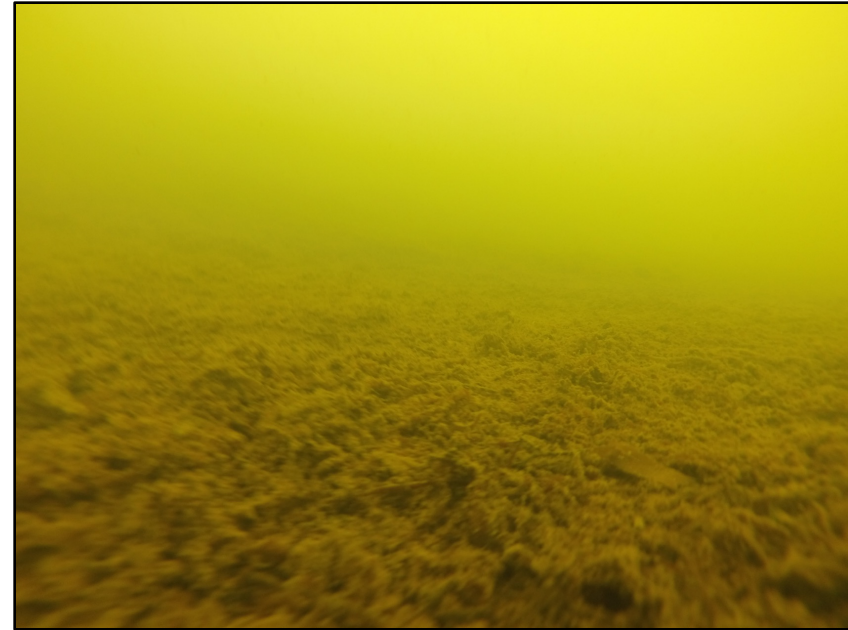


2015/11/21

The Reality of the Canals

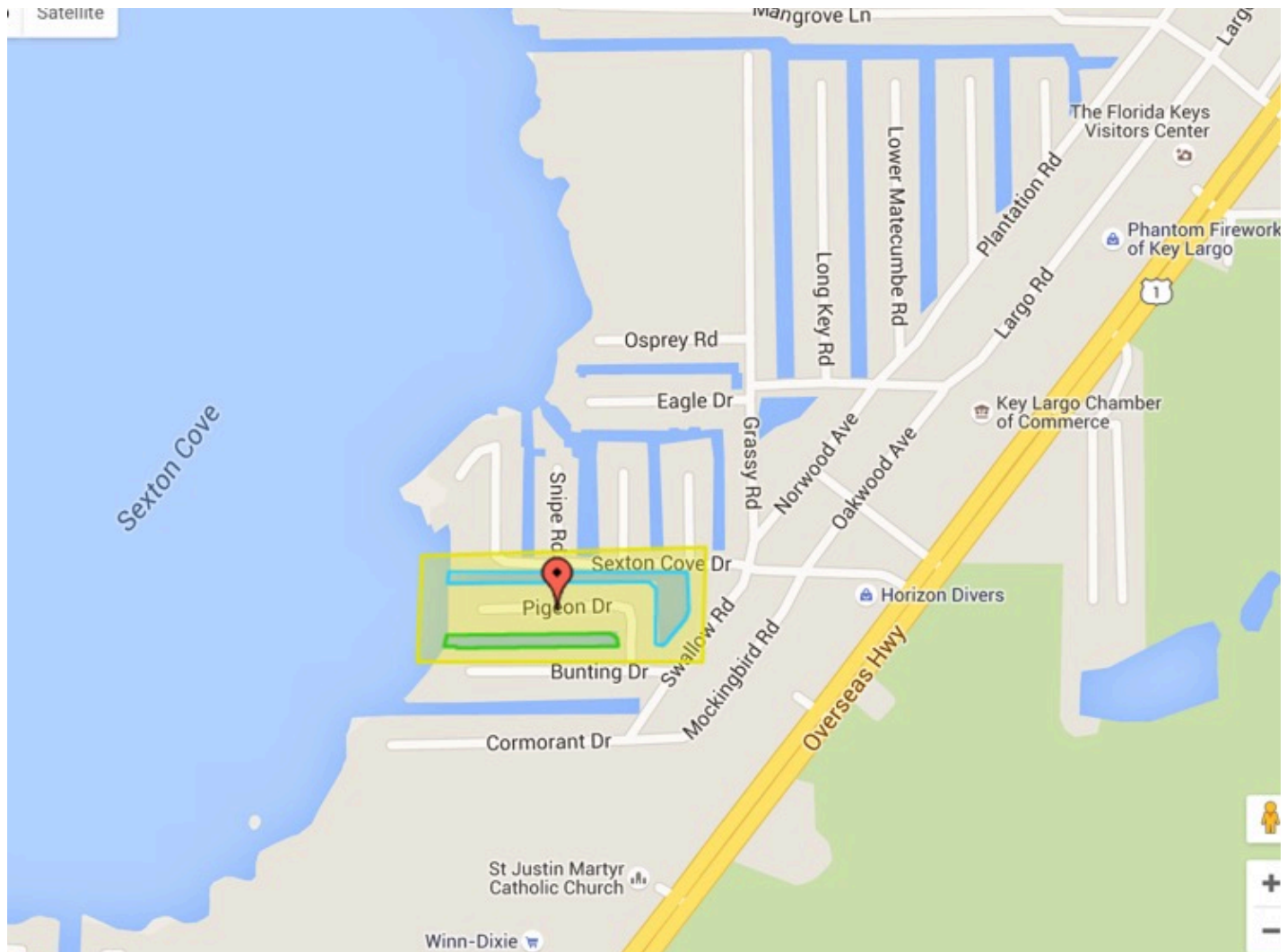


50 meters outside canal



25 meters inside canal

Canal 28 and 29





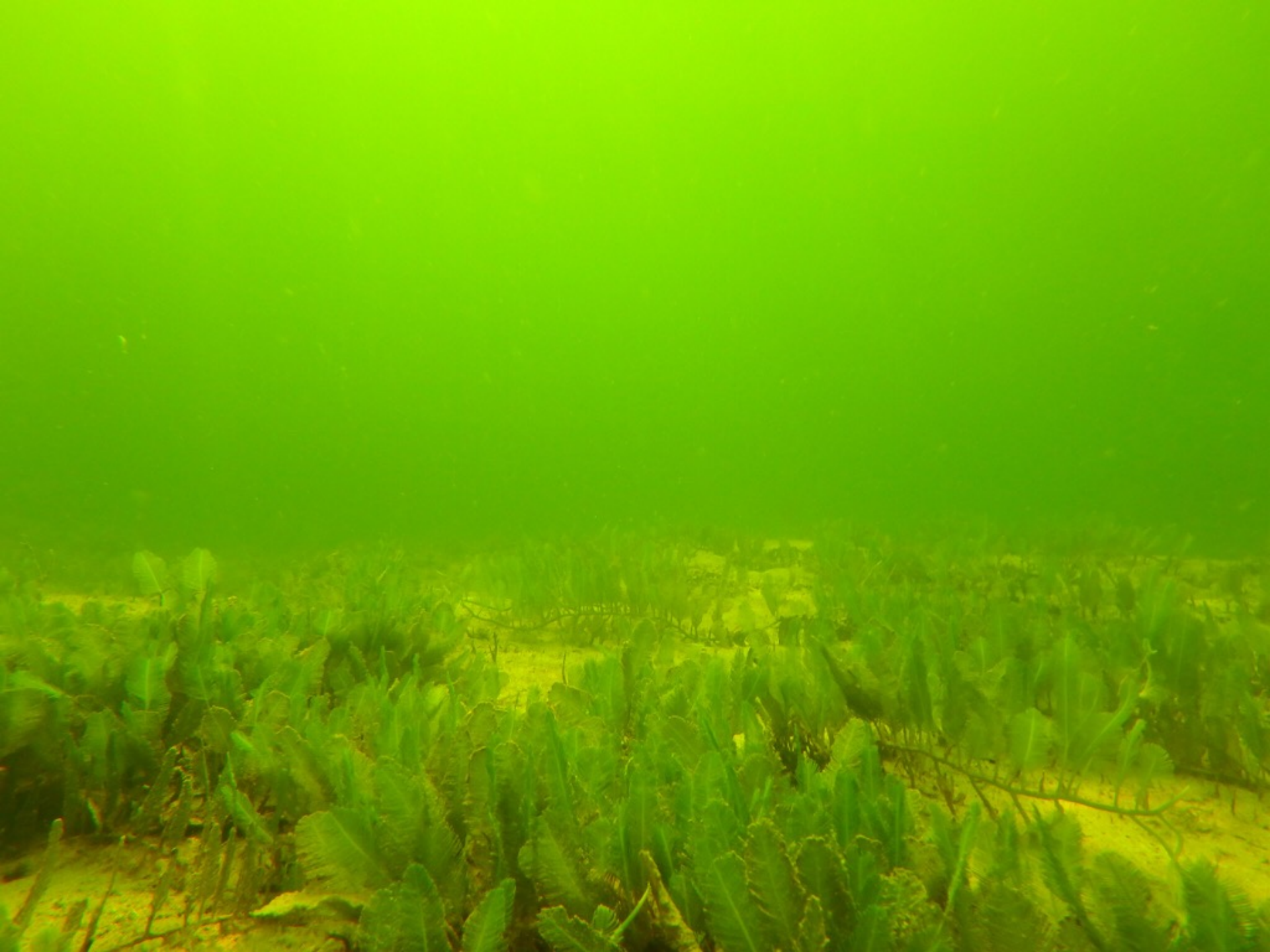


128
Q41.

WHIRL-PAK. Naco WHIRL-PAK. Naco WHIRL-PAK.

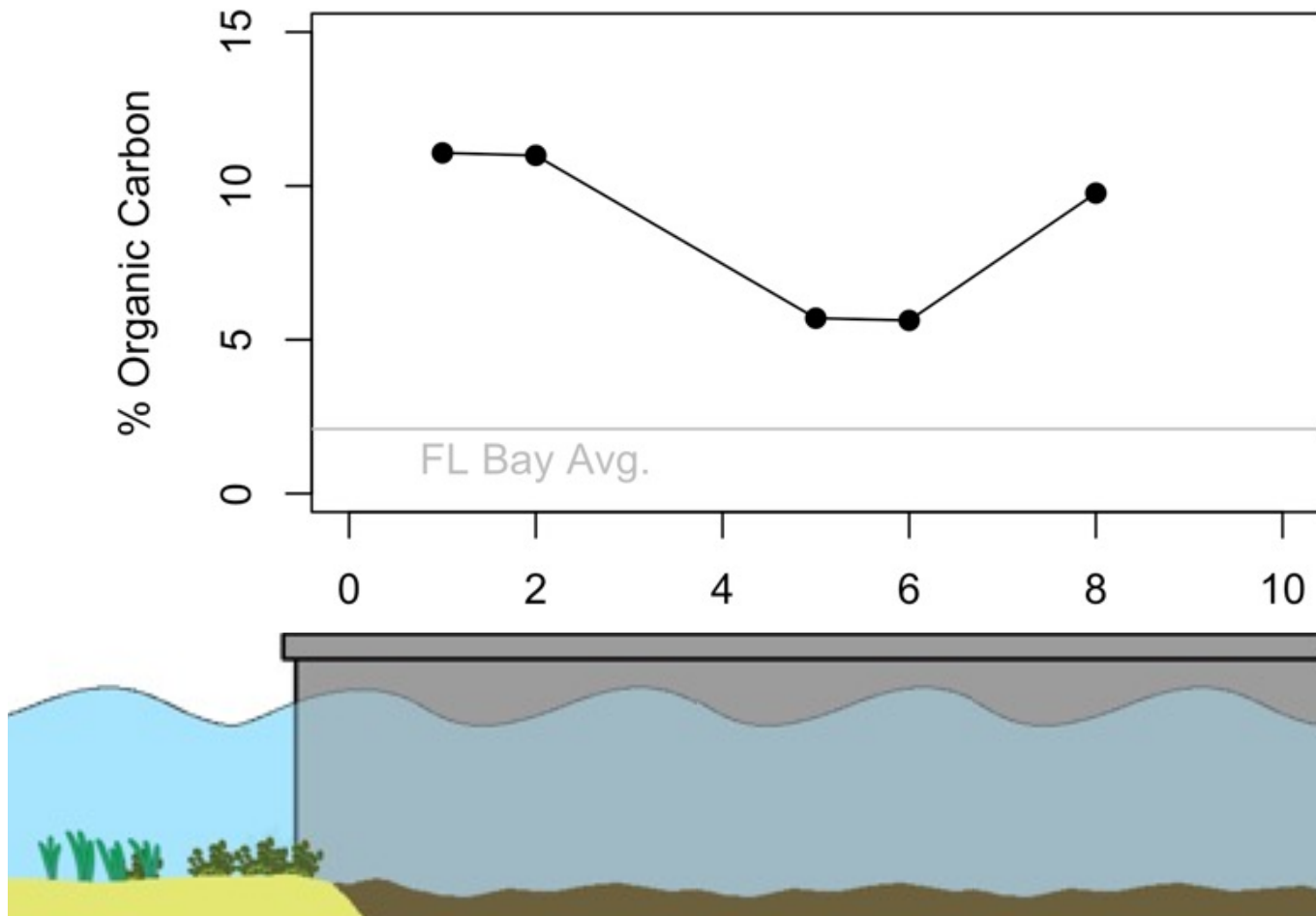
YAMAHA

150



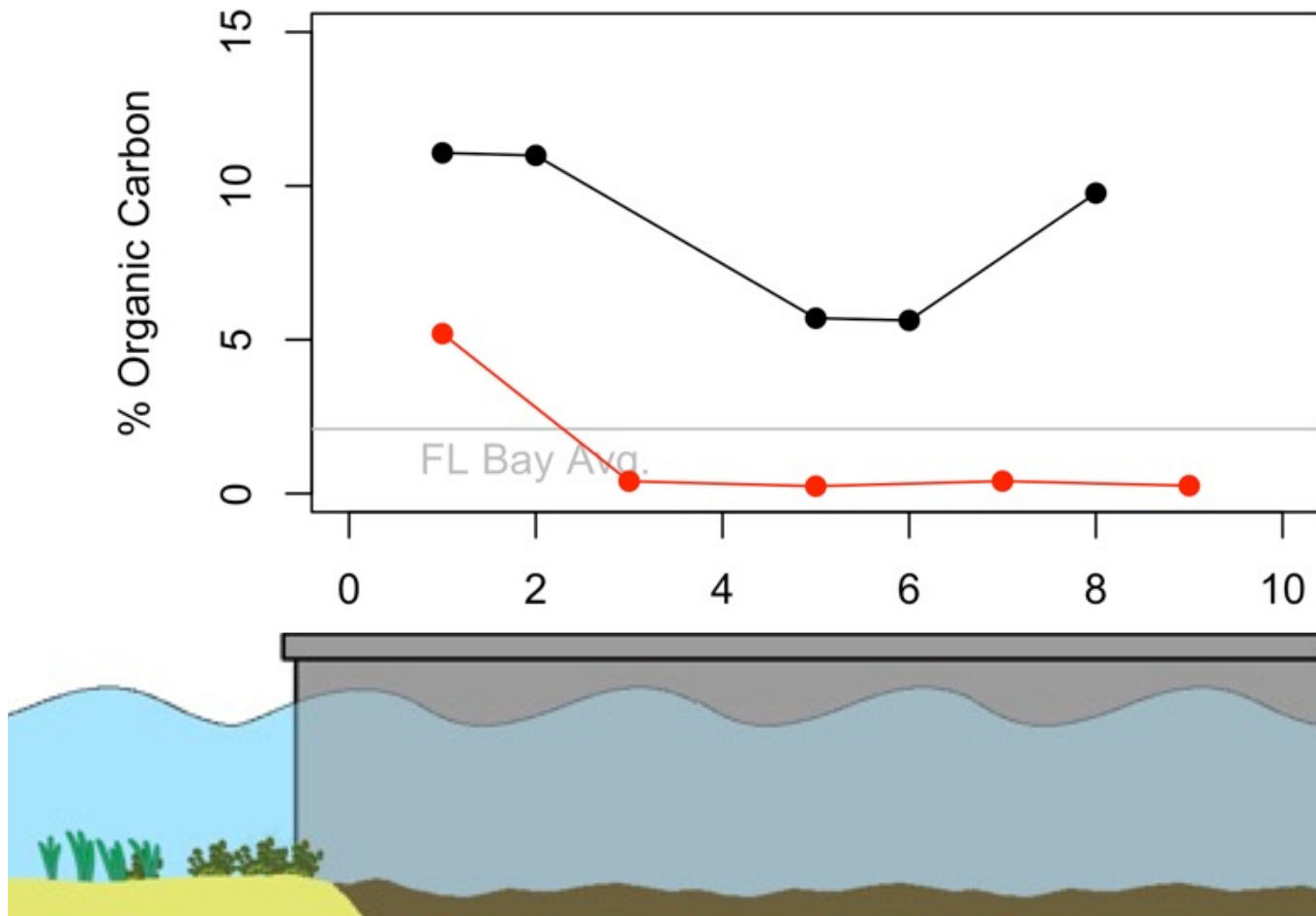


Canals 28 and 29



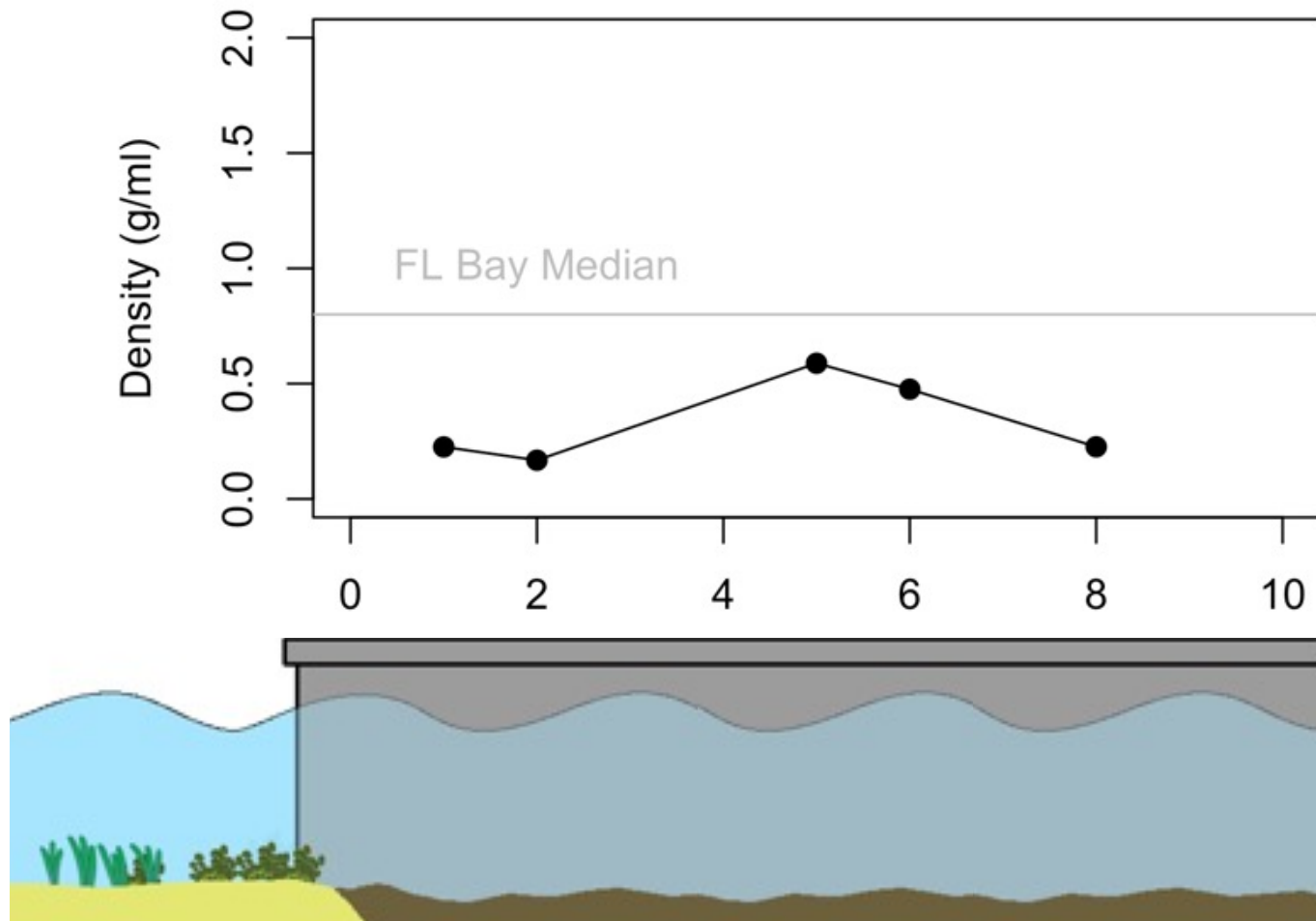
Canal 28

Canals 28 and 29

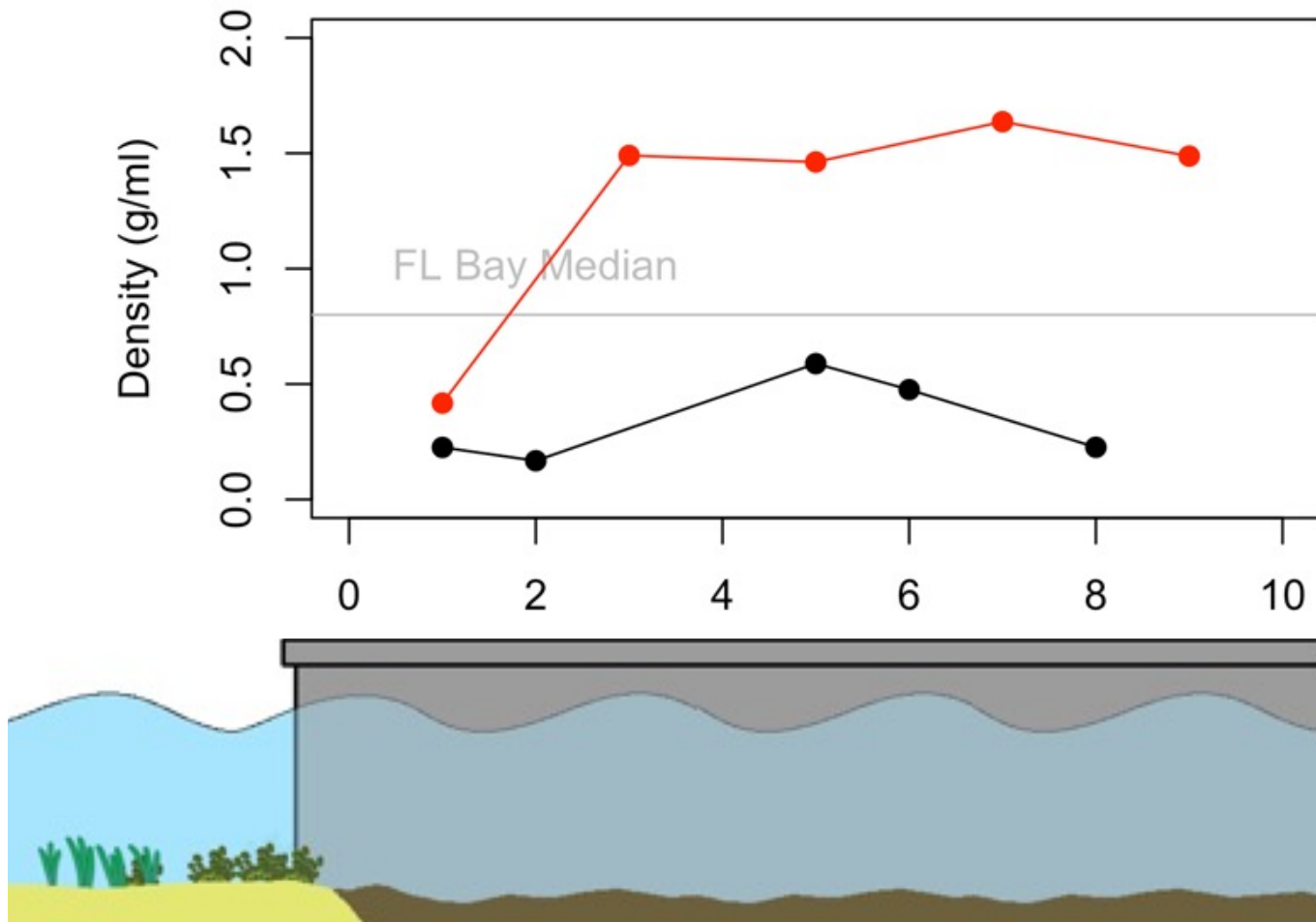


Canal 28
Canal 29

Canals 28 and 29

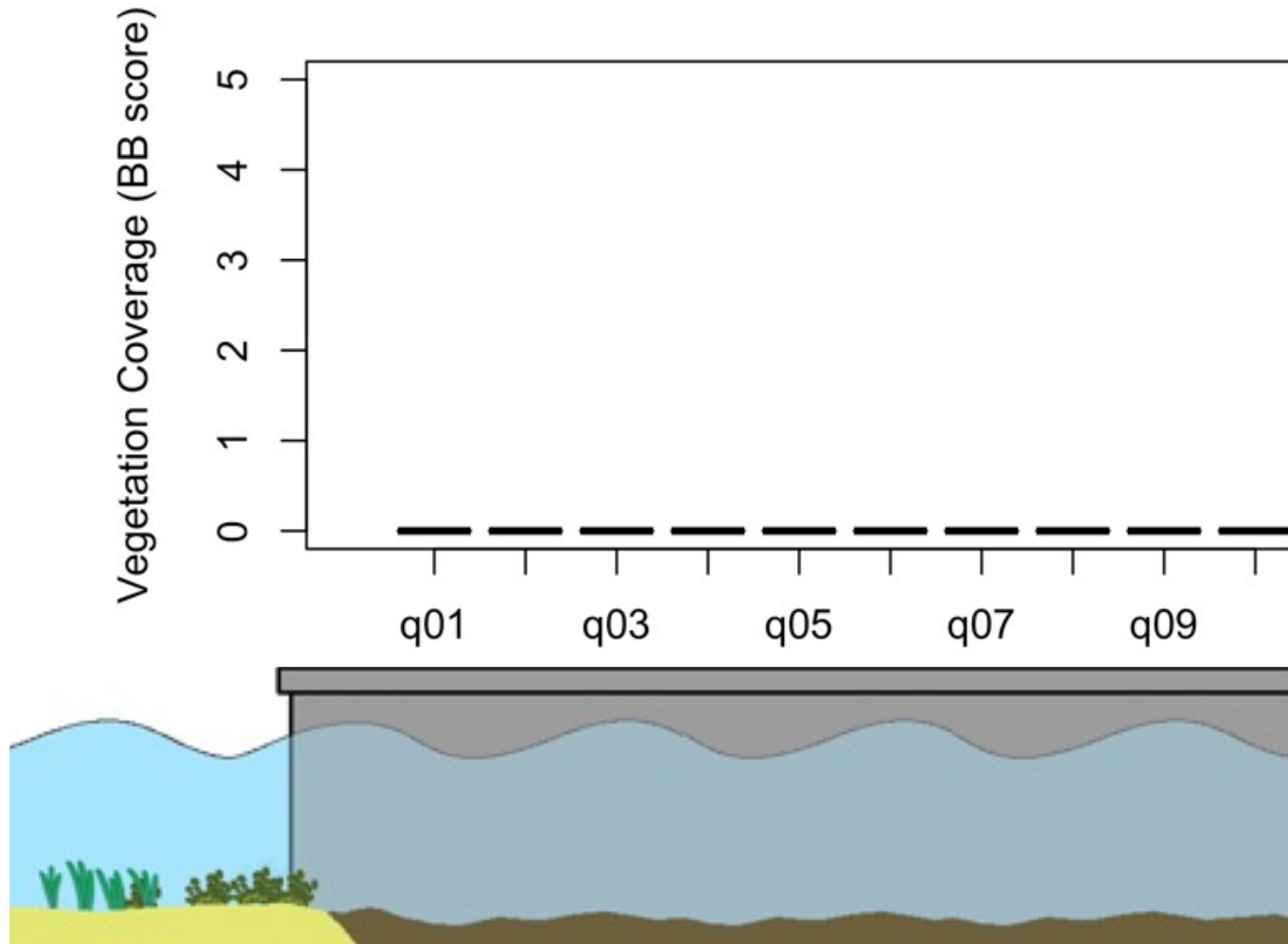


Canals 28 and 29

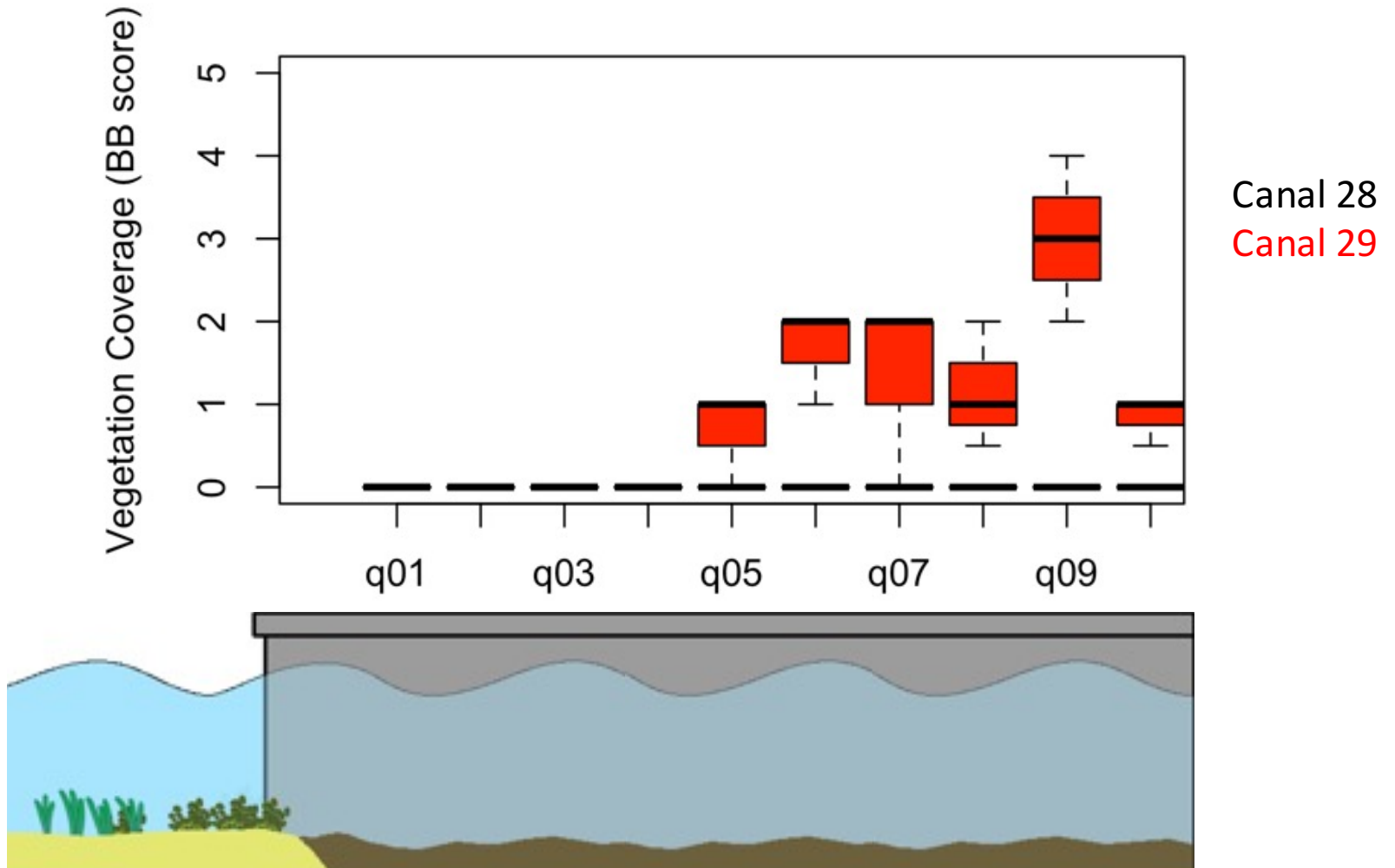


Canal 28
Canal 29

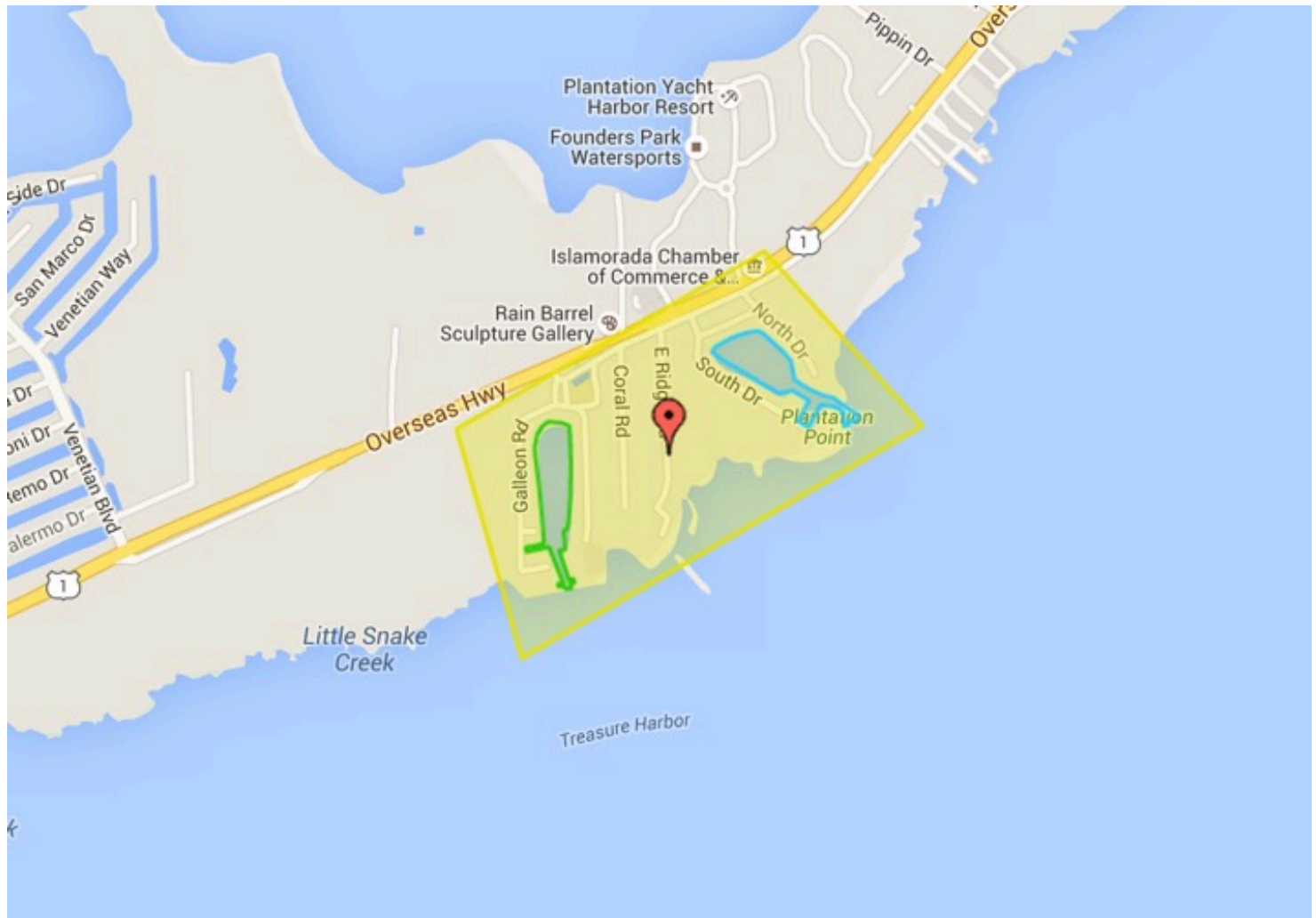
Canals 28 and 29



Canals 28 and 29



Canal 132 and 137

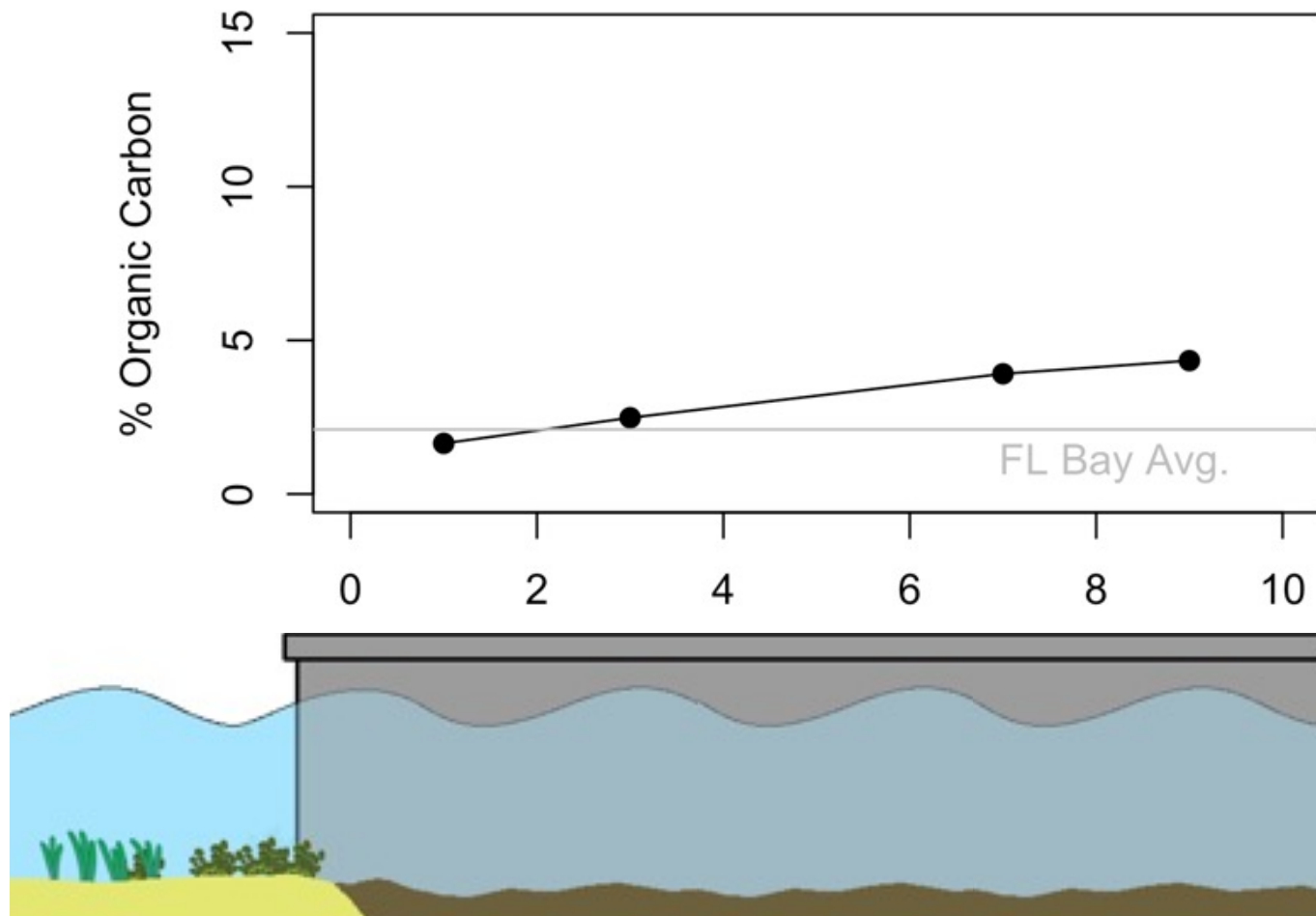


21

100

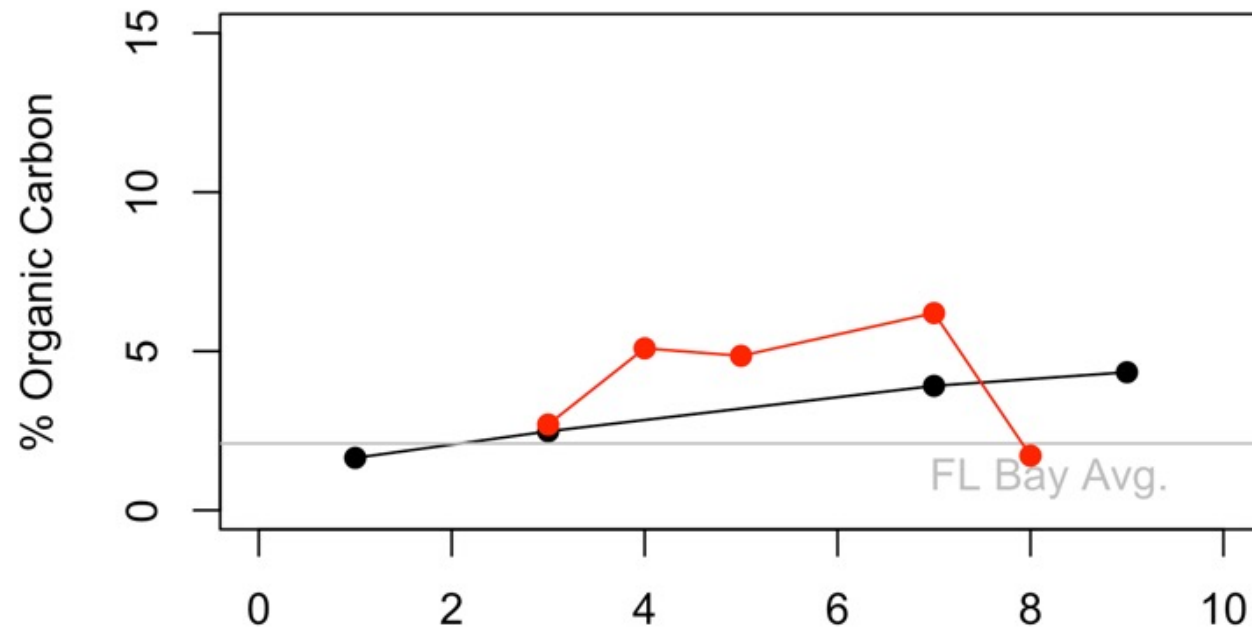
21

Canal 132 and 137

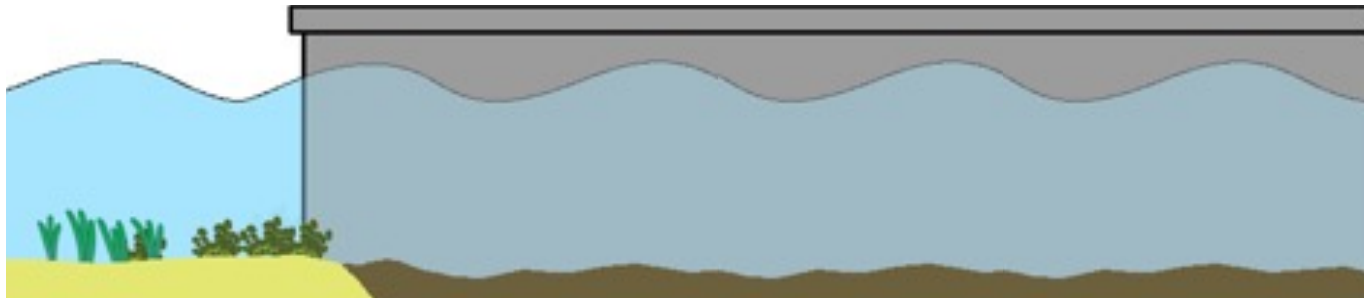


Canal 132

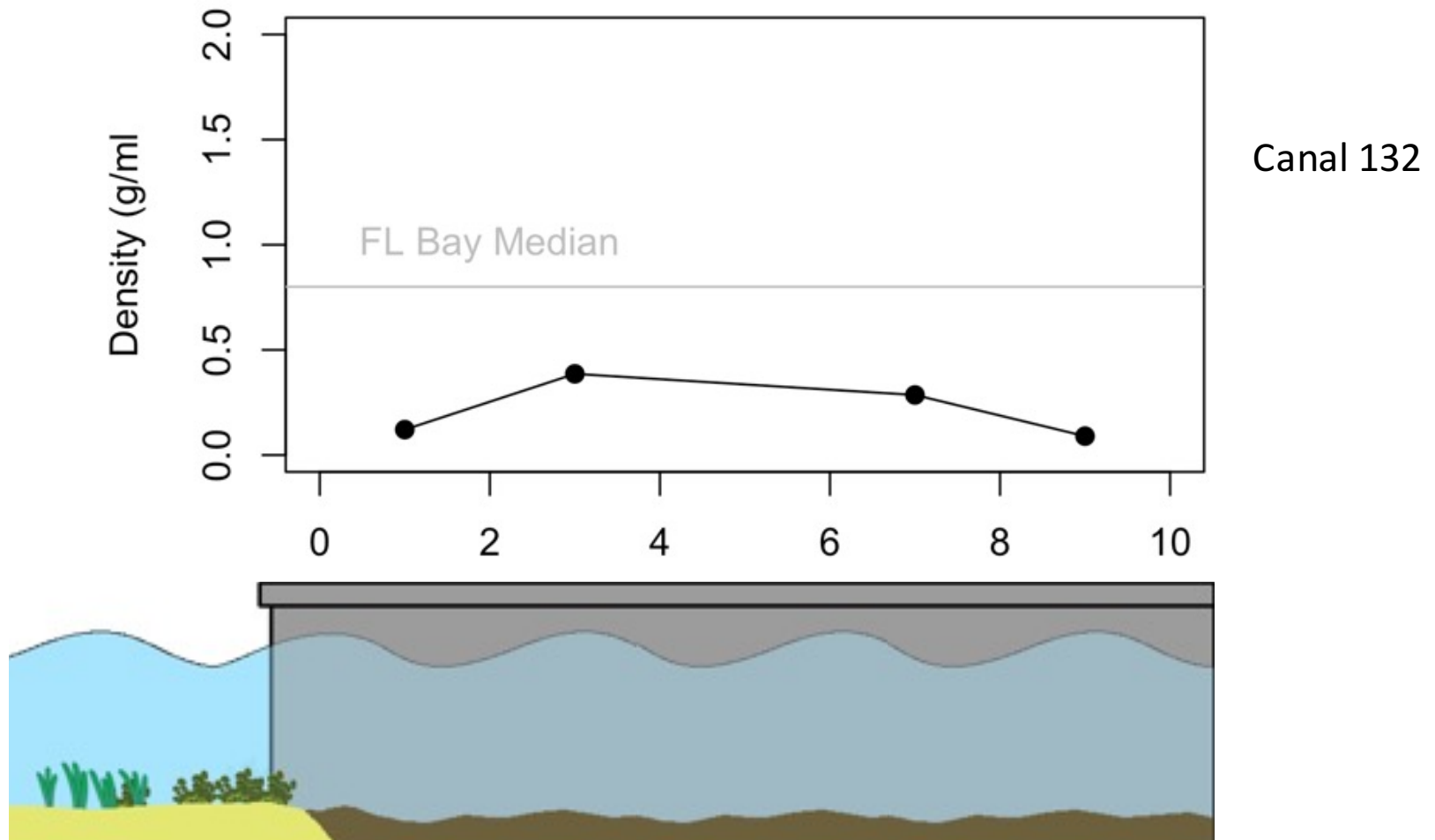
Canal 132 and 137



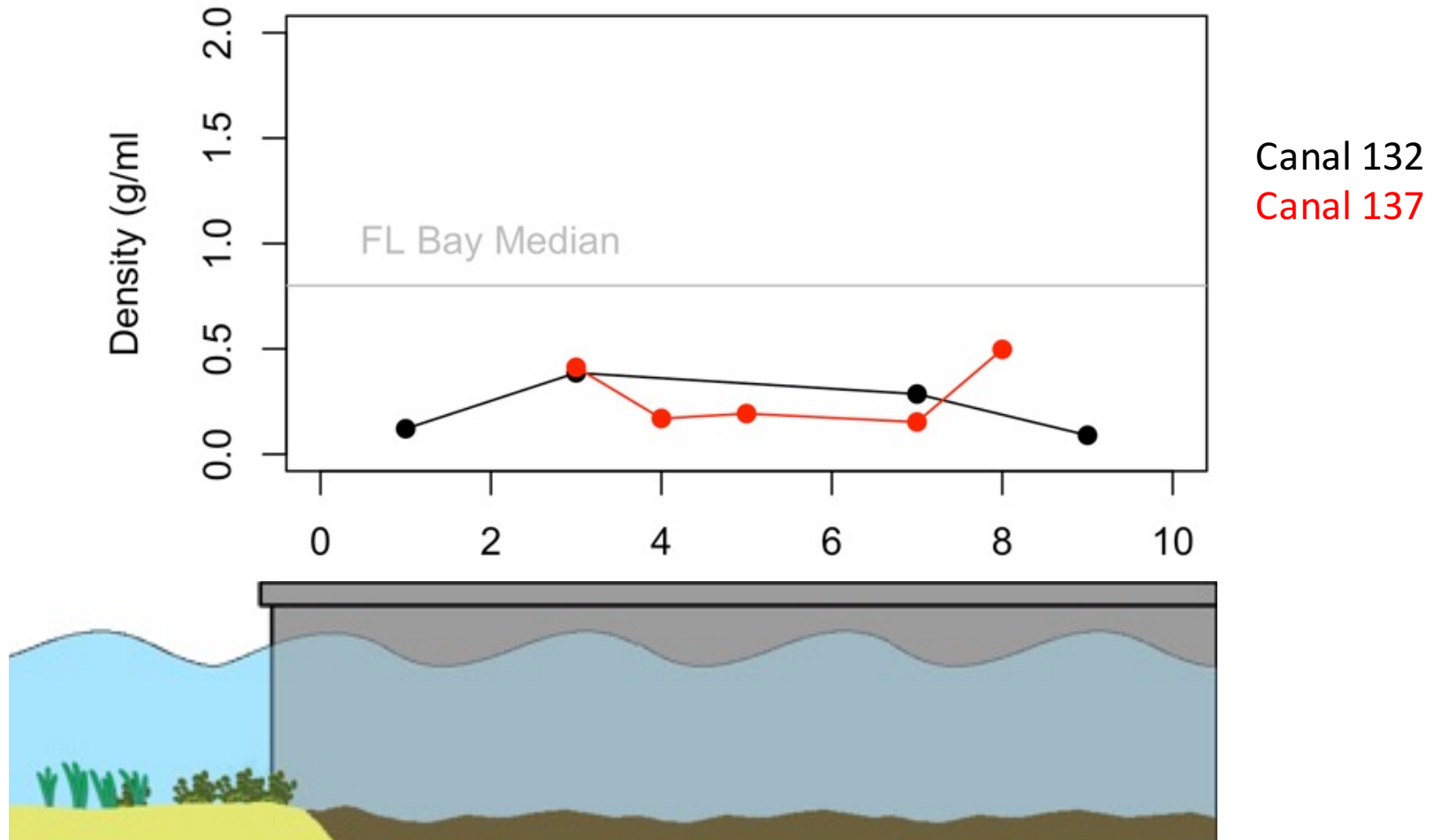
Canal 132
Canal 137



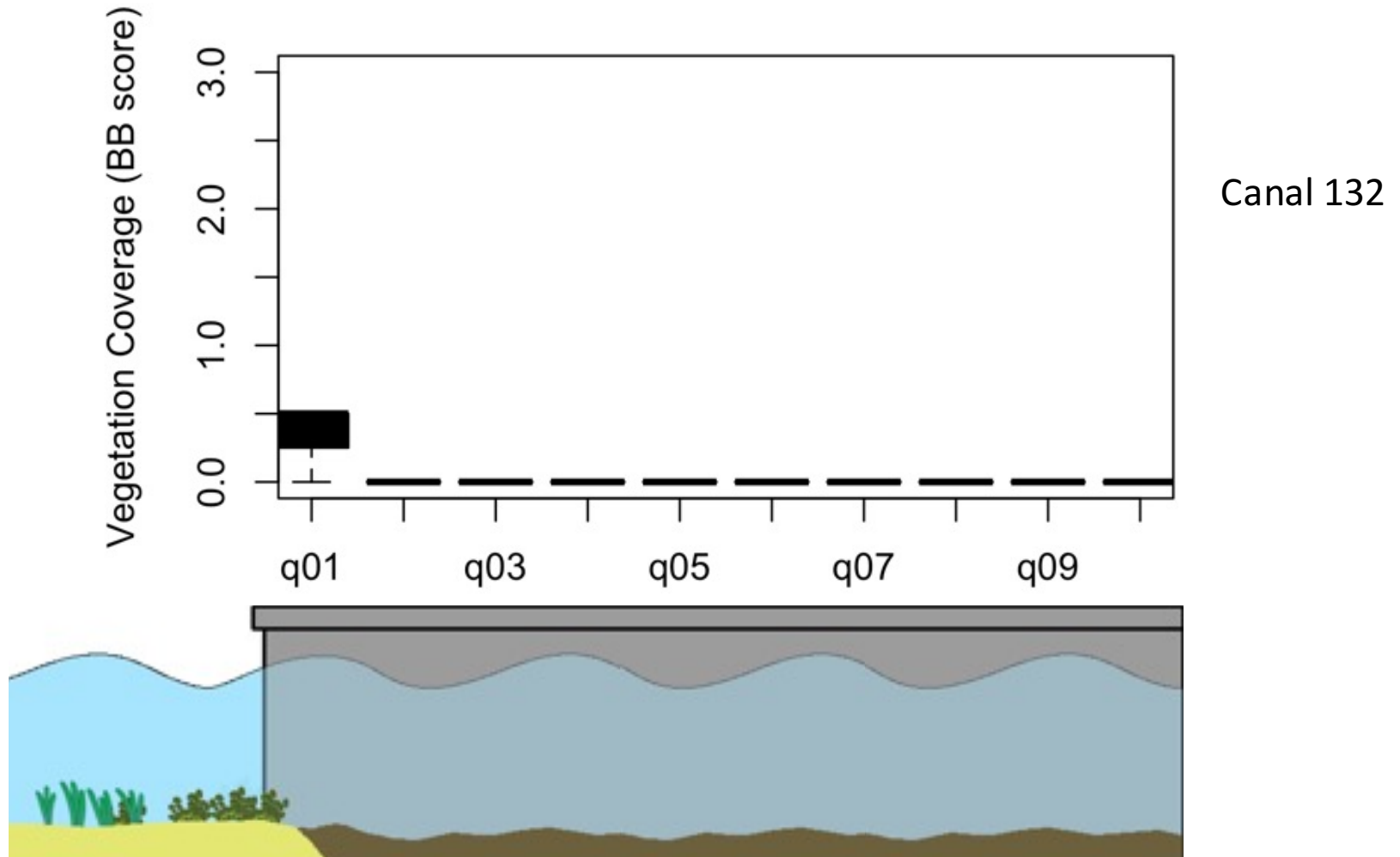
Canal 132 and 137



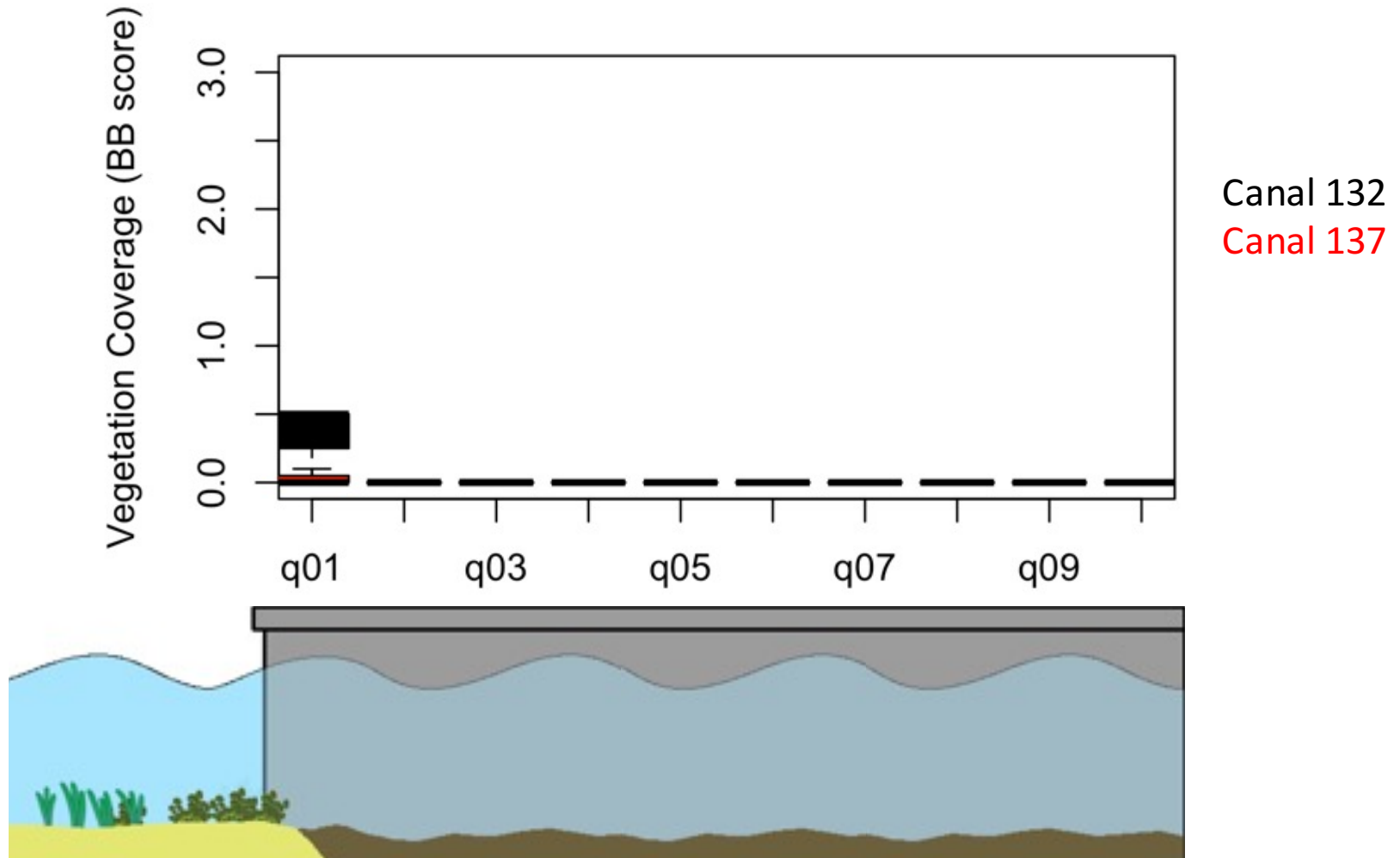
Canal 132 and 137



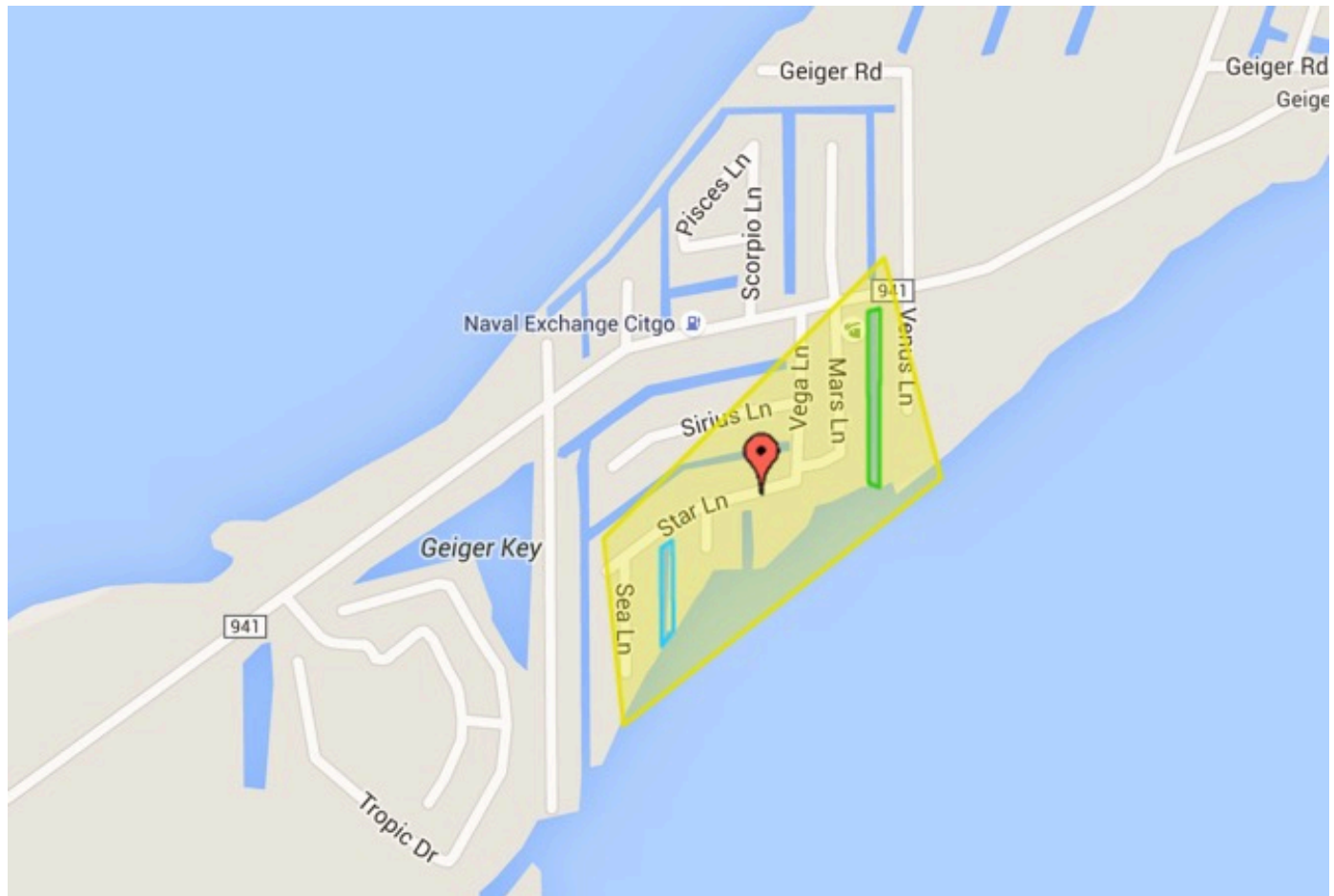
Canal 132 and 137



Canal 132 and 137



Canal 472

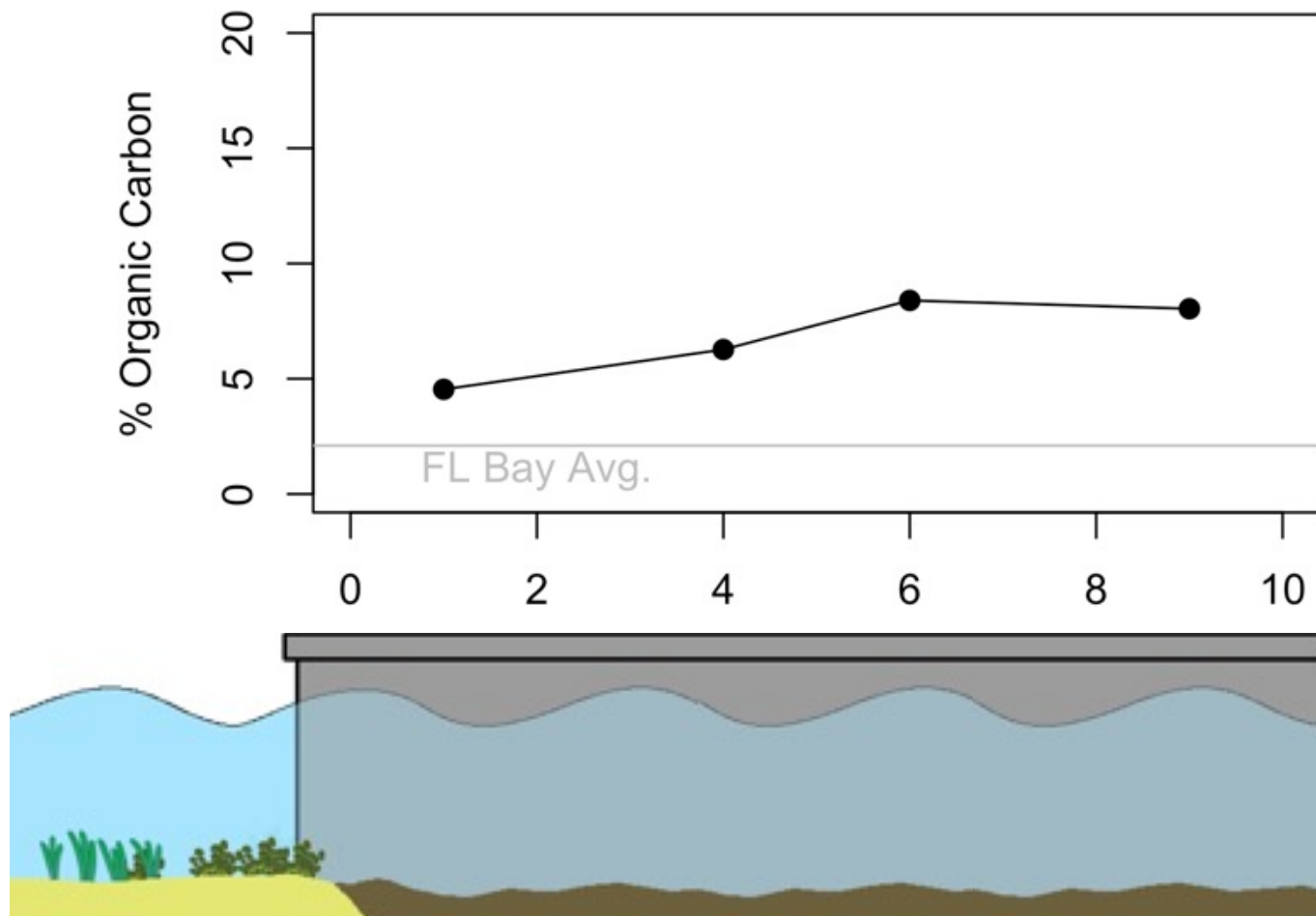






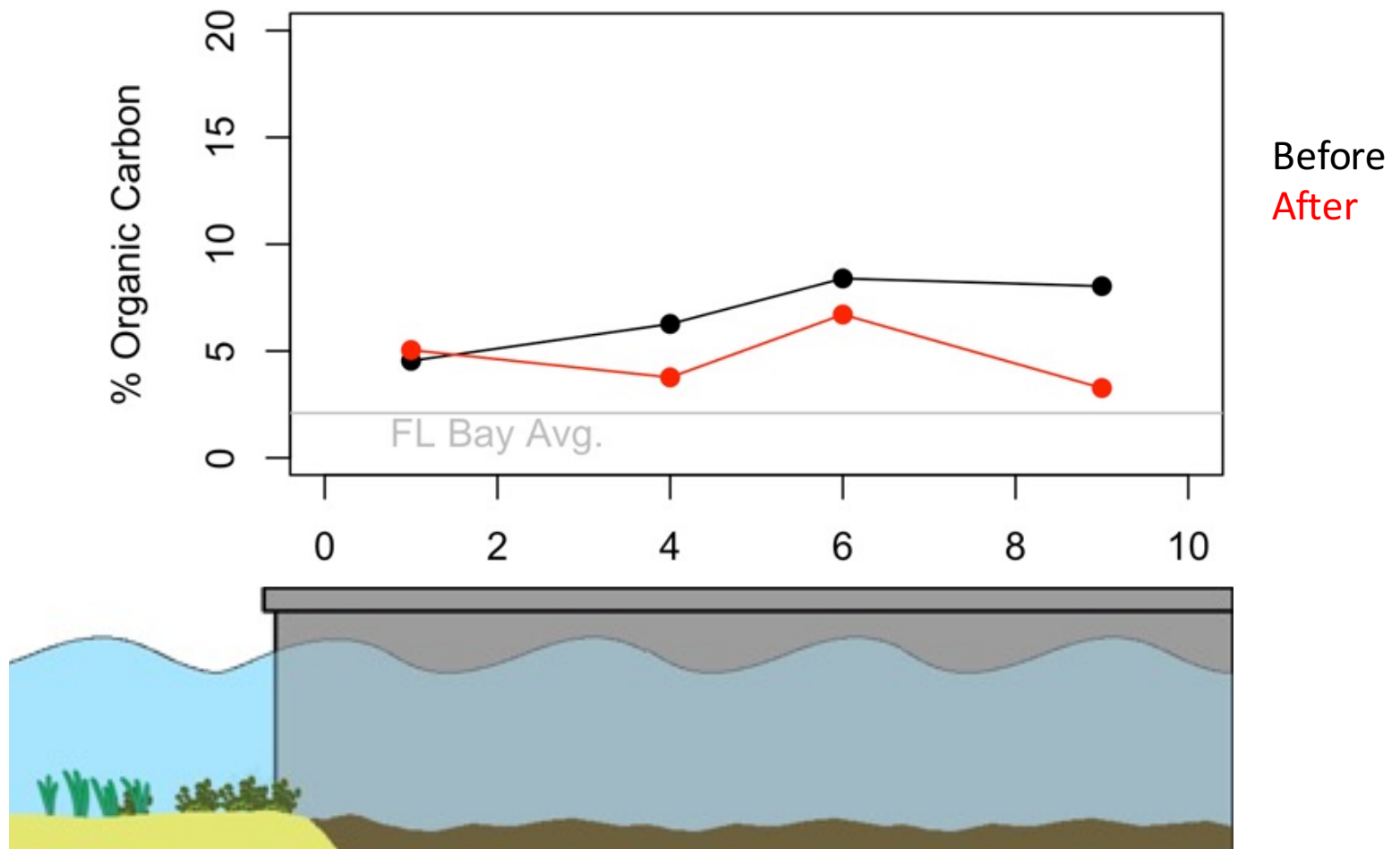


Canal 472

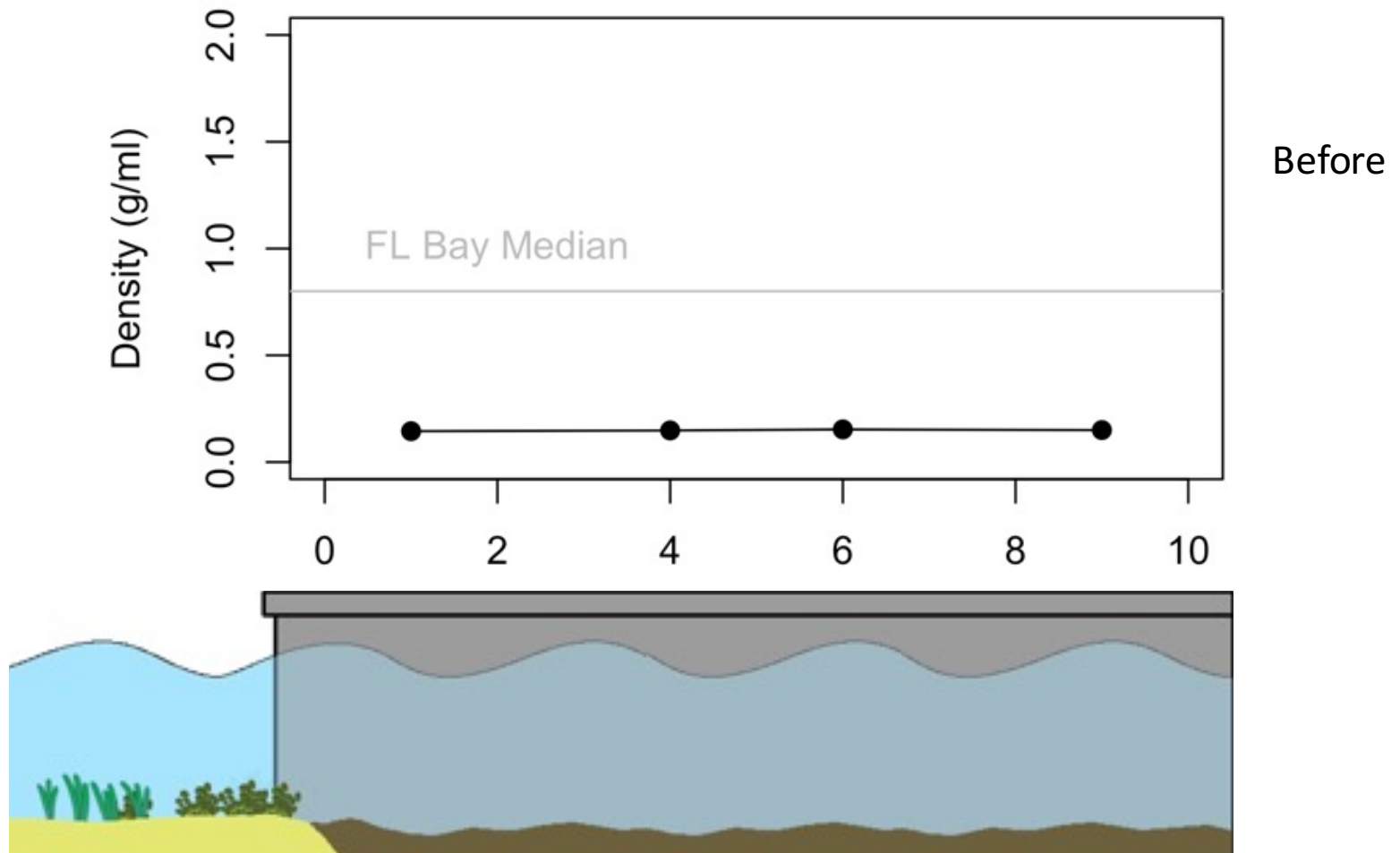


Before

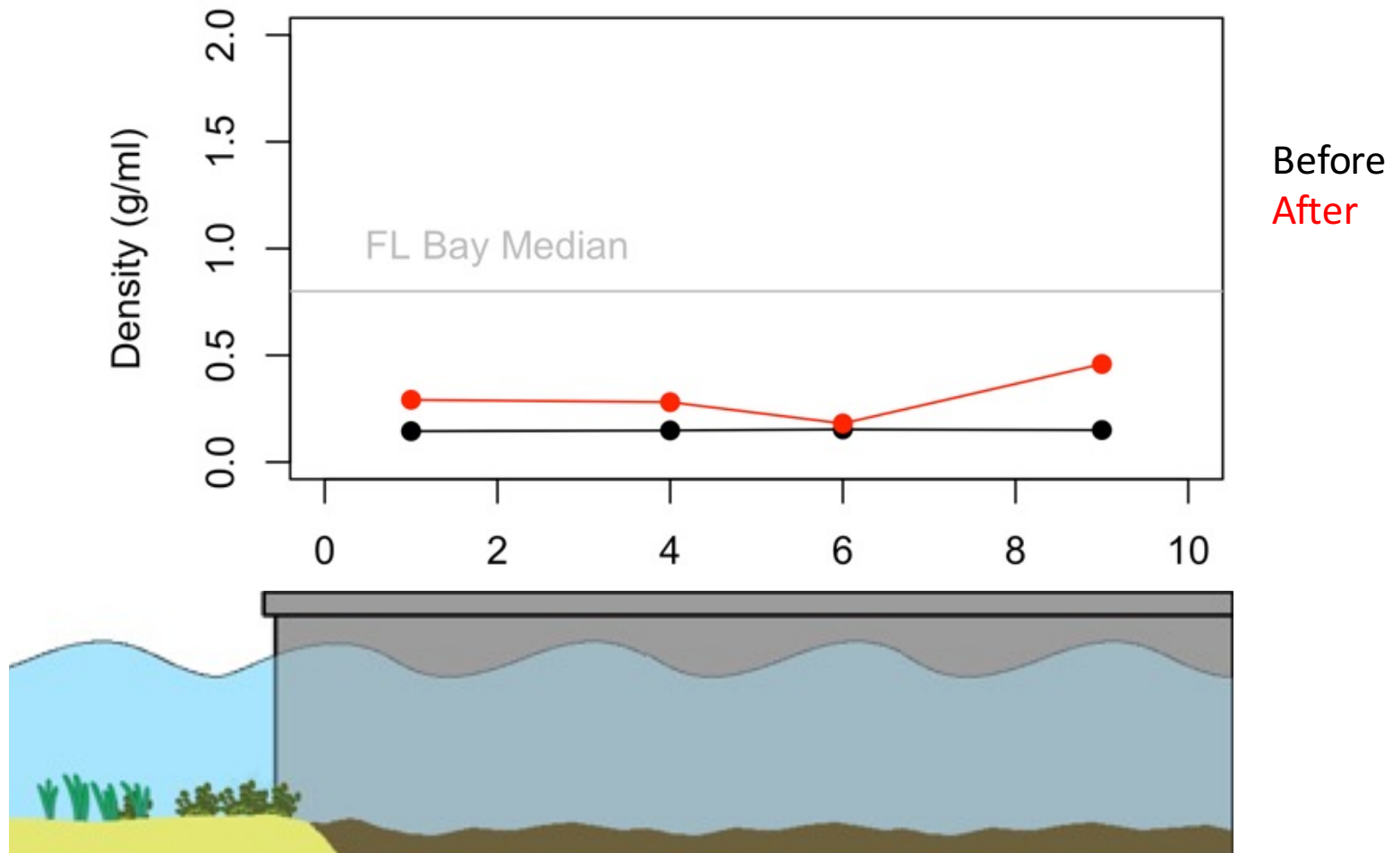
Canal 472



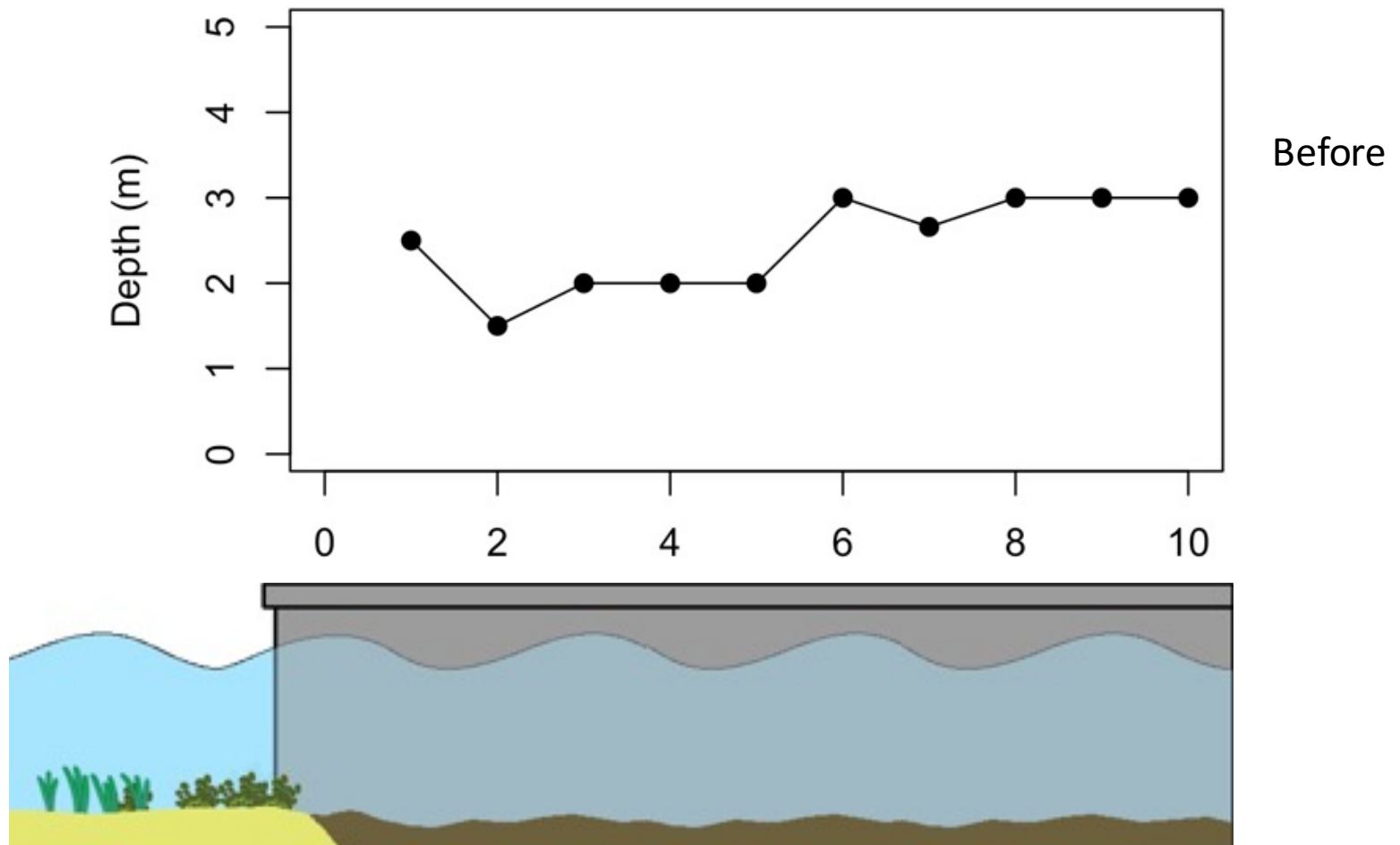
Canal 472



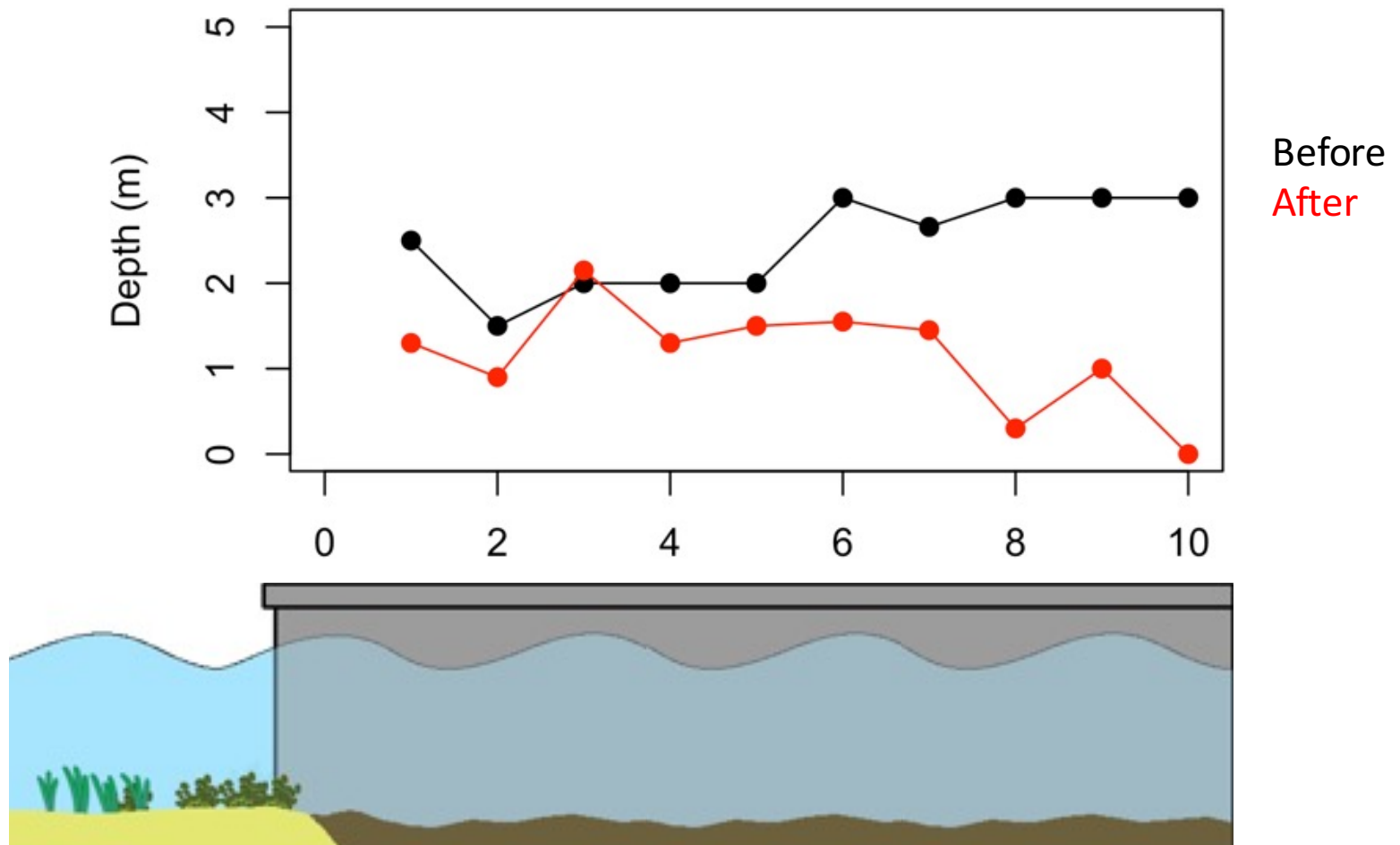
Canal 472



Canal 472



Canal 472



Methane release from Canals





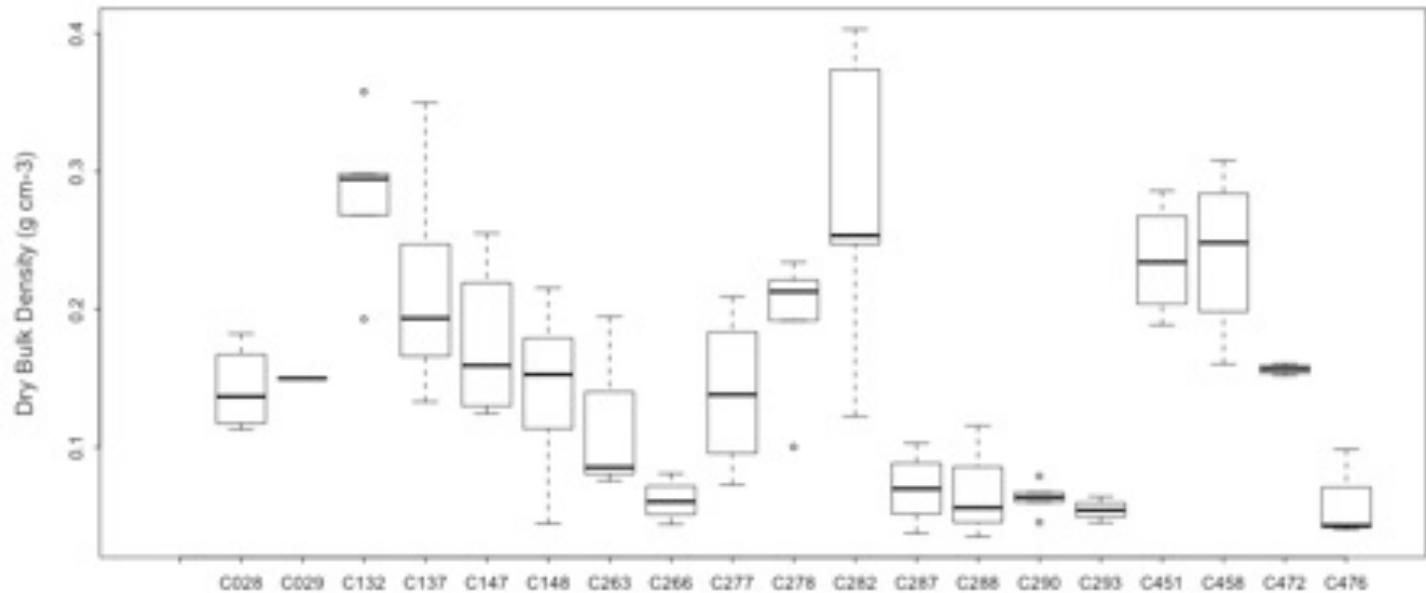




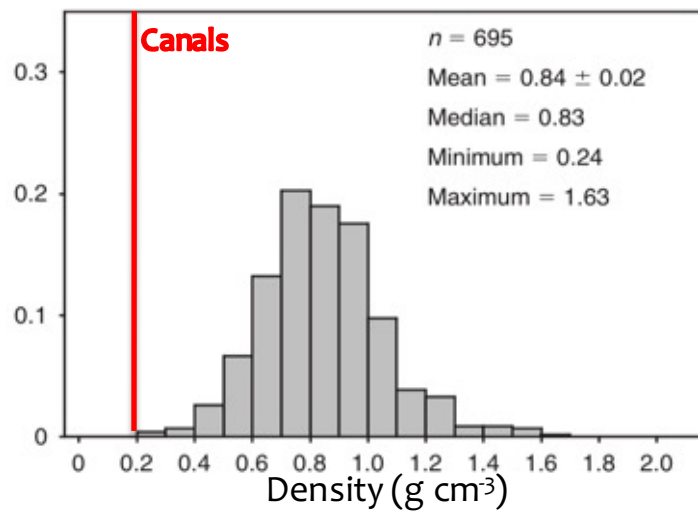


<http://seagrass.fiu.edu>
jhowa033@fiu.edu

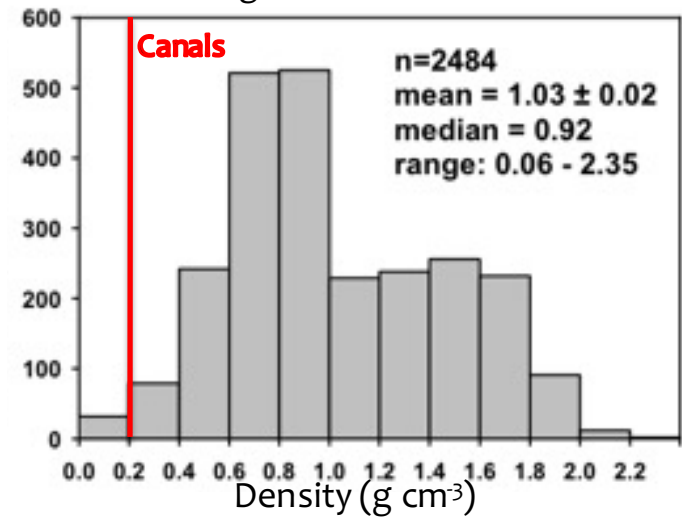
Sediment Density



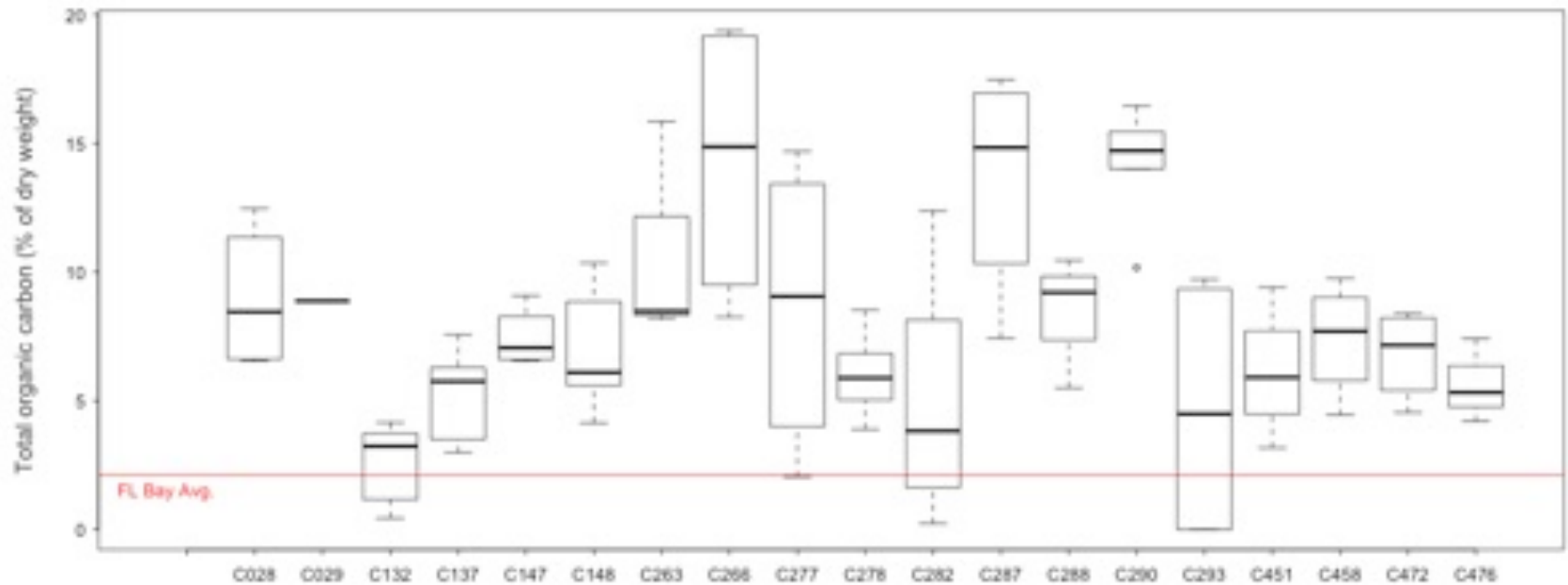
Florida Bay Seagrass Sediment



Global Seagrass Sediment



Sediment Organic Carbon



Sediment Phosphorus

